

Montagevorbereitung

Weitere Informationen u. a. zur bestimmungsgemäßen Verwendung und zur Vermeidung von vorhersehbarer Fehlanwendung finden Sie unter www.dorma.de.

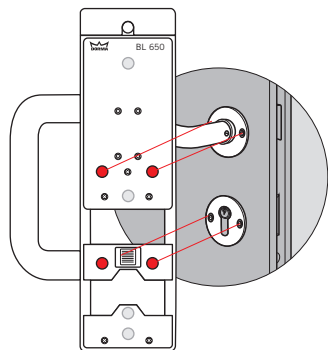
Gewährleistungsansprüche können nur akzeptiert werden, wenn die Montagearbeiten von einem Fachbetrieb durchgeführt werden.

Mounting Preparation

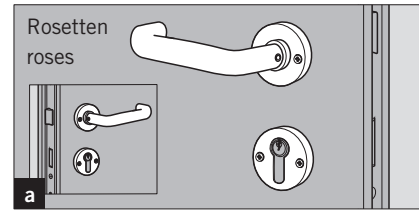
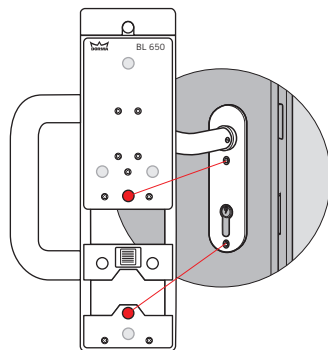
Further information regarding e. g. the intended application as well as how to avoid predictable mistakes can be found at www.dorma.com.

Warranty claims can only be accepted if fitting is carried out by a trained technical specialist.

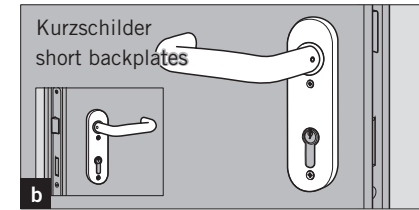
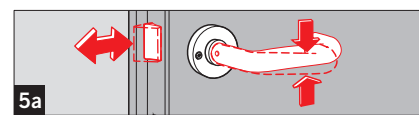
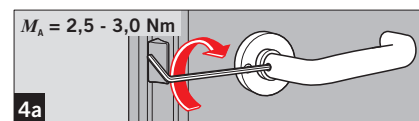
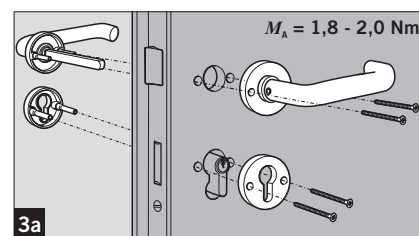
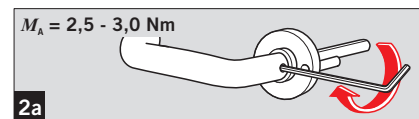
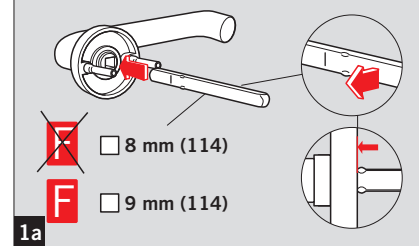
BL 650:



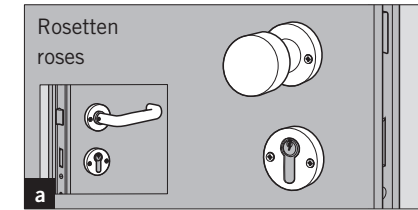
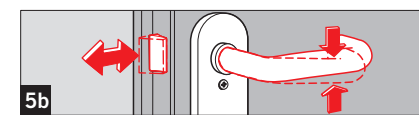
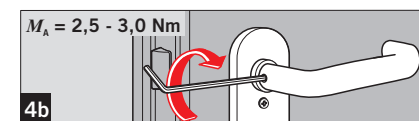
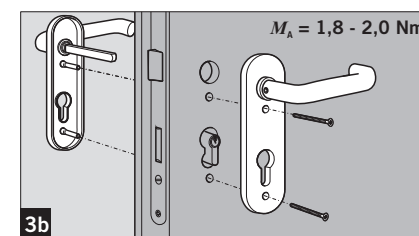
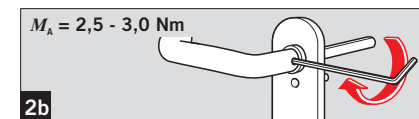
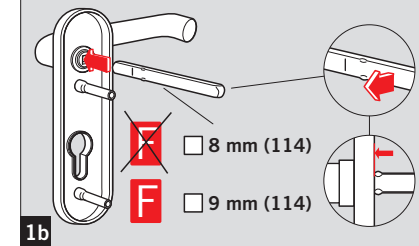
BL 650:



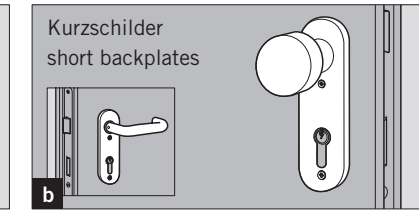
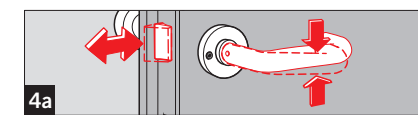
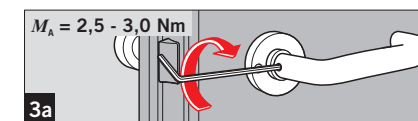
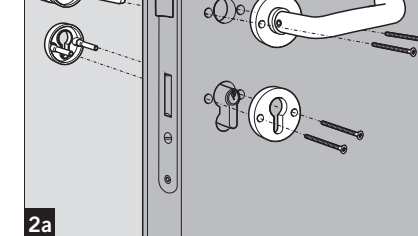
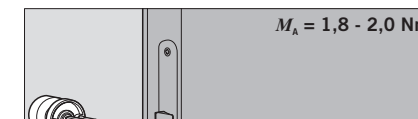
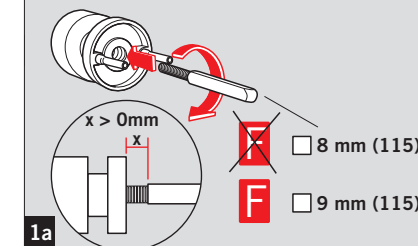
	8 mm	9 mm	
TD	L	L	
35 - 50	128	120	
50 - 65	143	135	
65 - 80	158	150	



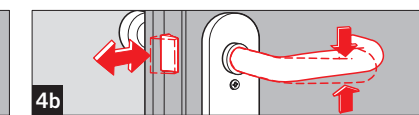
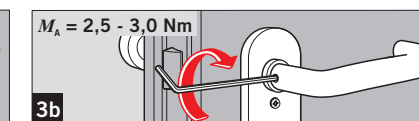
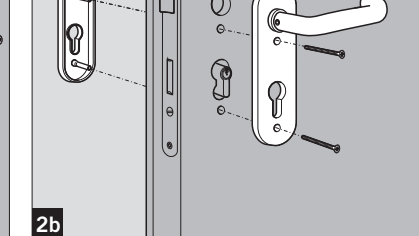
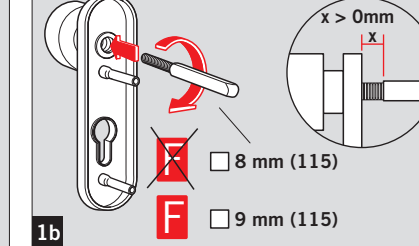
	8 mm	9 mm	
TD	L	L	
35 - 50	128	120	
50 - 65	143	135	
65 - 80	158	150	

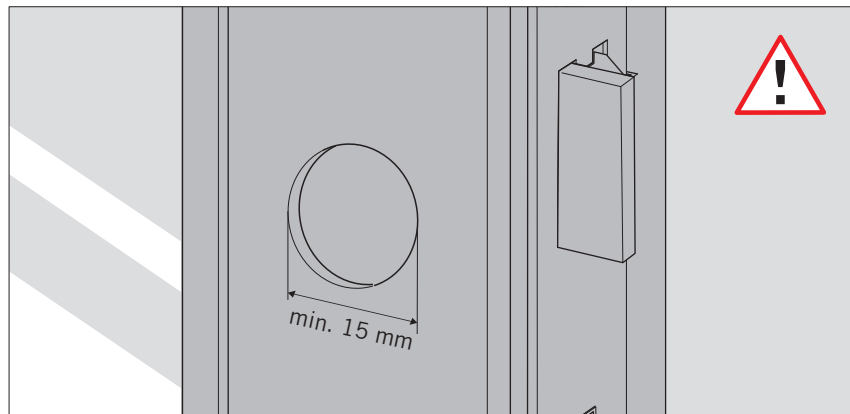


	8 mm	9 mm	
TD	L	L	
35 - 50	90	90	
50 - 65	90	90	
65 - 80	120	120	



	8 mm	9 mm	
TD	L	L	
35 - 50	90	90	
50 - 65	90	90	
65 - 80	120	120	





Montagevorbereitung

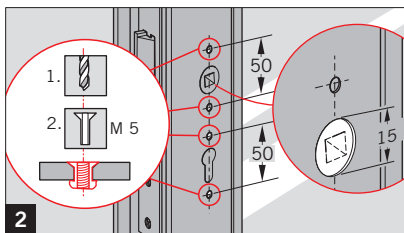
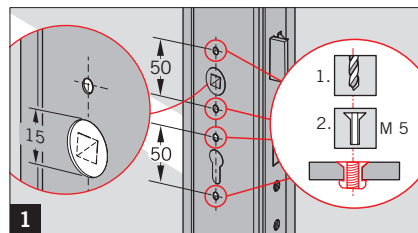
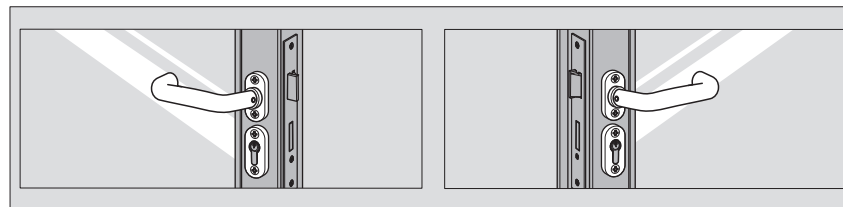
Weitere Informationen u. a. zur bestimmungsgemäßen Verwendung und zur Vermeidung von vorhersehbarer Fehlanwendung finden Sie unter www.dorma.de.

Gewährleistungsansprüche können nur akzeptiert werden, wenn die Montagearbeiten von einem Fachbetrieb durchgeführt werden.

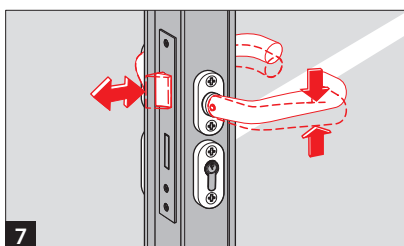
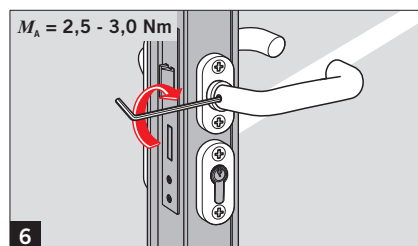
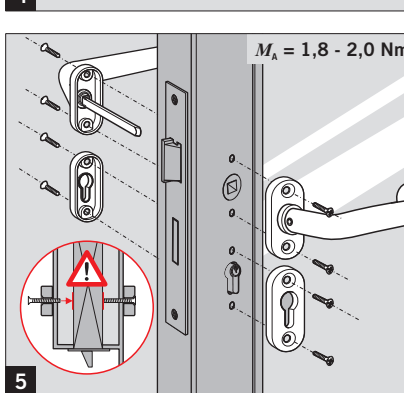
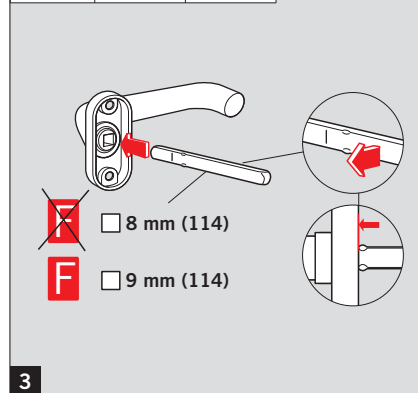
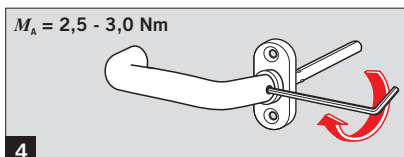
Mounting Preparation

Further information regarding e. g. the intended application as well as how to avoid predictable mistakes can be found at www.dorma.com.

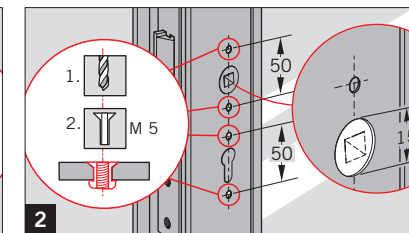
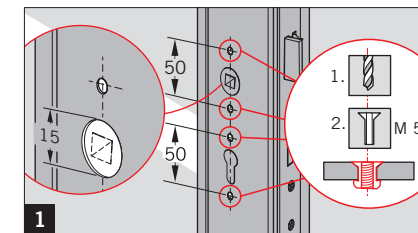
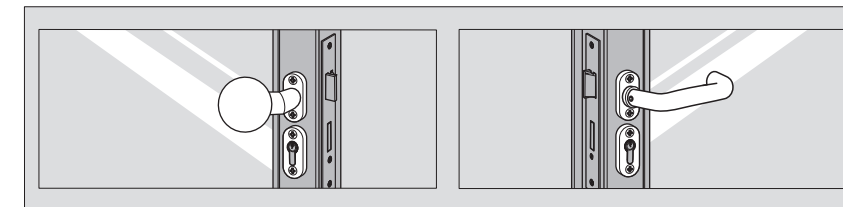
Warranty claims can only be accepted if fitting is carried out by a trained technical specialist.



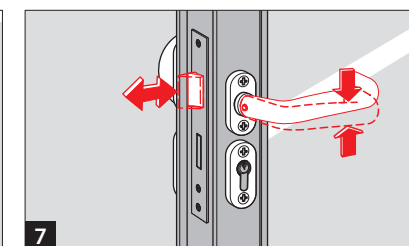
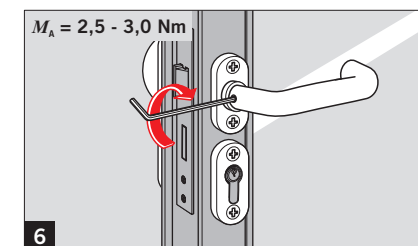
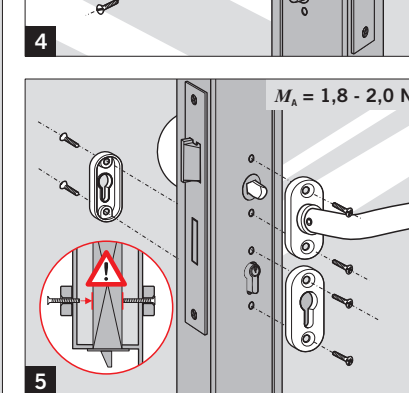
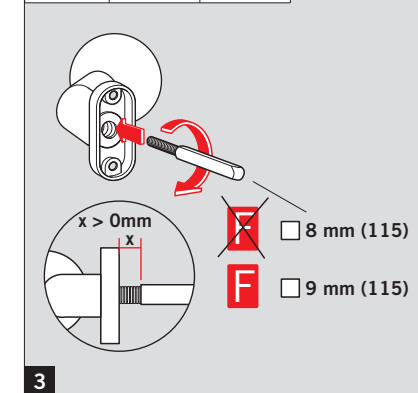
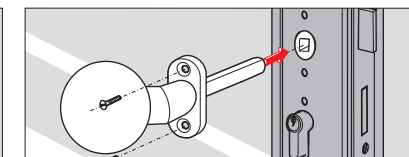
	8 mm	9 mm
TD	L	L
35 - 48	97	97
48 - 61	110	110
61 - 74	123	123



M_A = Richtwert / Guide value



	8 mm	9 mm
TD	L	L
35 - 50	75	75
50 - 65	90	90
65 - 80	120	120



M_A = Richtwert / Guide value