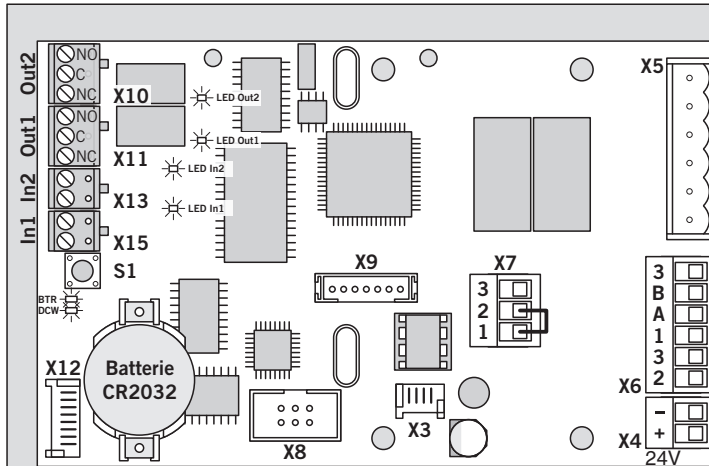


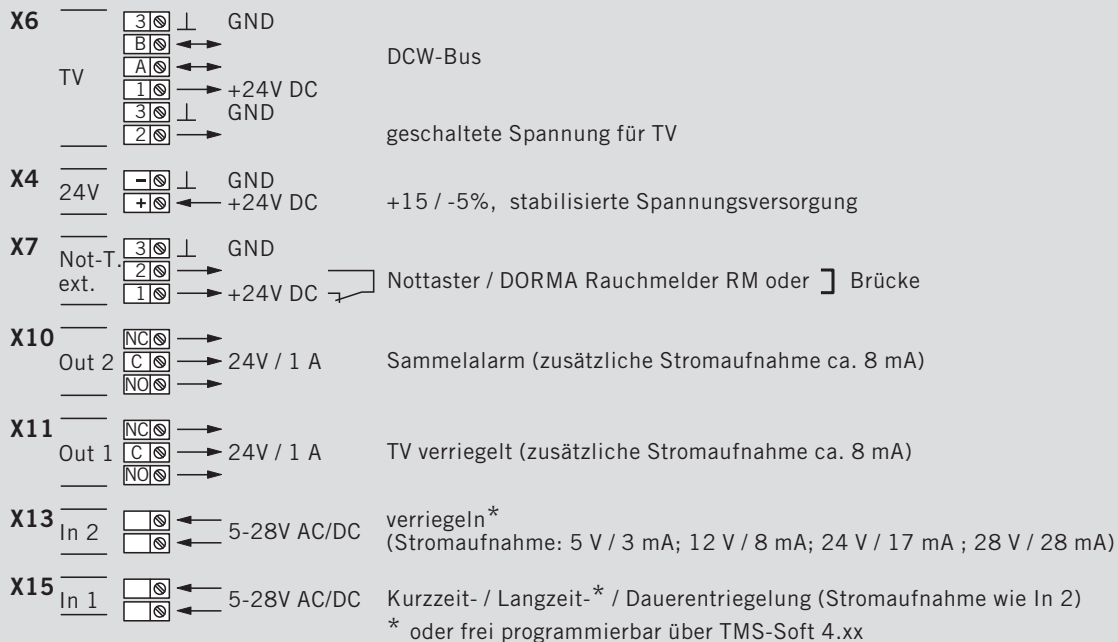
WN 058126-45932
 07/11


Elektrostatisch gefährdete Bauelemente

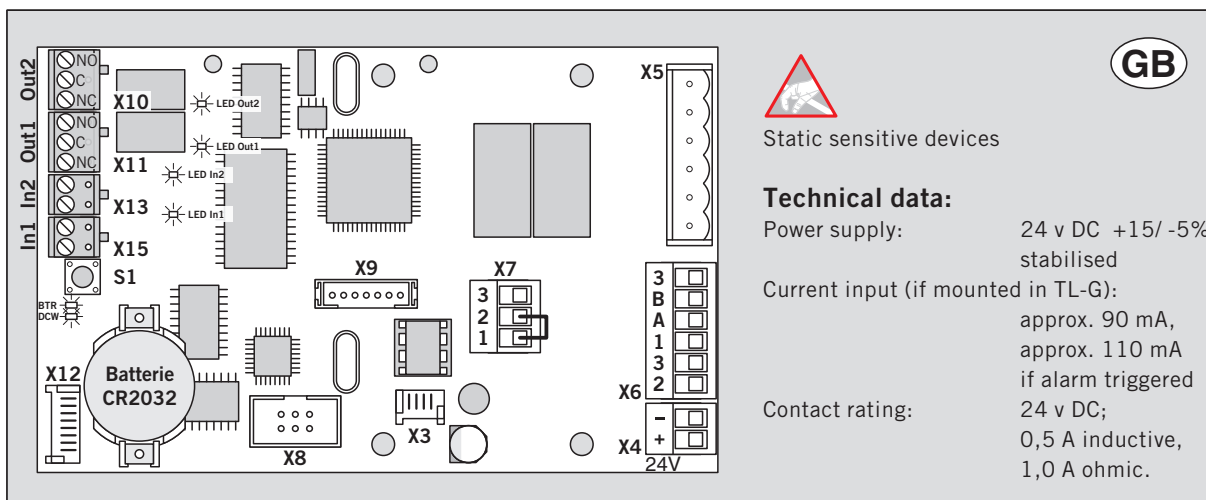
D

Technische Daten:

Versorgungsspannung: 24 V DC +15/ -5%
 stabilisiert
 Stromaufnahme (bei Einbau in TL-G):
 ca. 90 mA,
 ca. 110 mA
 im Alarmfall
 Kontaktbelastbarkeit:
 24 V DC;
 0,5 A induktiv,
 1,0 A ohmsch.

Beschaltung TL-S TMS 2 Basic**Beschreibung TL-S TMS 2 Basic**

- | | | | |
|------------|--|------------|--|
| X3 | Verbindung zum internen Schlüsseltaster/-schalter. | S1 | 1. Funktion: Rücksetzen der Komponenten-Tabelle (DCW-Teilnehmer) ---> Taster S1 gedrückt halten; Spannungsversorgung einschalten; Taster loslassen. |
| X4 | Spannungsversorgung 24 V DC, +15 / -5% | | 2. Funktion: Software-Reset und Laden der Werkseinstellung ---> während des Betriebs Taster länger als 8 Sek. gedrückt halten (mit akustischer Quittierung). |
| X5 | Verbindung zum Nottaster. | BTR | LED blinkt = Betrieb |
| X6 | Verbindung zur TV / DCW. | | LED leuchtet = Hardwarefehler (Reset mit S1 / 1.Funktion). |
| X7 | externer Not-Taster / Rauchmelder. | DCW | LED blitzt bei Telegrammverkehr kurz auf. |
| X8 | PC-Schnittstelle RS 232 / LON-Adapter. | | |
| X9 | Verbindung zur Firmware-Programmierung. | | |
| X10 | Out 2 | | |
| X11 | Out 1 | | |
| X12 | Verbindung zur TL-OM / Beleuchtungsmodul. | | |
| X13 | In 2 | | |
| X15 | In 1 | | |



Terminal connections TL-S TMS 2 Basic

X6	<table border="0"> <tr><td>3</td><td>⊥</td><td>GND</td></tr> <tr><td>B</td><td>←</td><td></td></tr> <tr><td>A</td><td>←</td><td></td></tr> <tr><td>1</td><td>←</td><td>+24V DC</td></tr> <tr><td>3</td><td>⊥</td><td>GND</td></tr> <tr><td>2</td><td>→</td><td></td></tr> </table>	3	⊥	GND	B	←		A	←		1	←	+24V DC	3	⊥	GND	2	→		DCW bus
3	⊥	GND																		
B	←																			
A	←																			
1	←	+24V DC																		
3	⊥	GND																		
2	→																			
TV		Switched supply for TV (Emergency Off Circuit)																		
X4	<table border="0"> <tr><td>-</td><td>⊥</td><td>GND</td></tr> <tr><td>+</td><td>←</td><td>+24V DC</td></tr> </table>	-	⊥	GND	+	←	+24V DC	+15 / -5%, stabilised power supply												
-	⊥	GND																		
+	←	+24V DC																		
X7	<table border="0"> <tr><td>3</td><td>⊥</td><td>GND</td></tr> <tr><td>2</td><td>←</td><td></td></tr> <tr><td>1</td><td>→</td><td>+24V DC</td></tr> </table>	3	⊥	GND	2	←		1	→	+24V DC	Emergency pushbutton / DORMA smoke detector RM or] jumper									
3	⊥	GND																		
2	←																			
1	→	+24V DC																		
Not-T. ext.																				
X10	<table border="0"> <tr><td>NC</td><td>→</td><td></td></tr> <tr><td>C</td><td>→</td><td>24V / 1 A</td></tr> <tr><td>NO</td><td>→</td><td></td></tr> </table>	NC	→		C	→	24V / 1 A	NO	→		Alarm (additional current input approx. 8 mA)									
NC	→																			
C	→	24V / 1 A																		
NO	→																			
Out 2																				
X11	<table border="0"> <tr><td>NC</td><td>→</td><td></td></tr> <tr><td>C</td><td>→</td><td>24V / 1 A</td></tr> <tr><td>NO</td><td>→</td><td></td></tr> </table>	NC	→		C	→	24V / 1 A	NO	→		TV locked (additional current input approx. 8 mA)									
NC	→																			
C	→	24V / 1 A																		
NO	→																			
Out 1																				
X13	<table border="0"> <tr><td>⊗</td><td>←</td><td>5-28V AC/DC</td></tr> <tr><td>⊗</td><td>←</td><td></td></tr> </table>	⊗	←	5-28V AC/DC	⊗	←		To lock* (current input: 5 V / 3 mA; 12 V / 8 mA; 24 V / 17 mA ; 28 V / 28 mA)												
⊗	←	5-28V AC/DC																		
⊗	←																			
In 2																				
X15	<table border="0"> <tr><td>⊗</td><td>←</td><td>5-28V AC/DC</td></tr> <tr><td>⊗</td><td>←</td><td></td></tr> </table>	⊗	←	5-28V AC/DC	⊗	←		Short-time- / Long-time- / Permanent unlocking (current input as In 2) * or free programable via TMS-Soft 4.xx												
⊗	←	5-28V AC/DC																		
⊗	←																			
In 1																				

Description TL-S TMS 2 Basic

- X3** Connection to internal key switch.
- X4** Power supply 24 v DC, +15 / -5%
- X5** Connection to emergency pushbutton.
- X6** Connection to TV / DCW.
- X7** External emergency pushbutton / smoke detector.
- X8** PC-Interface RS 232 / LON-Adapter.
- X9** Connection to the firmware programming system.
- X10** Out 2
- X11** Out 1
- X12** Connection to TL-OM / lighting modul.
- X13** In 2
- X15** In 1

- S1** 1. function: reset the table of components (DCW-participations) ---> keep the button S1 pushed; switch on power input; release the button.
2. function: software reset and loading defaults ---> during operation keep the button pushed more than 8 sec. (with audible acknowledgement).

BTR ✨ LED flashes = operation
LED lights = hardware failure
(reset via S1 / 1. function)

DCW ✨ LED flashes short at telegram traffic