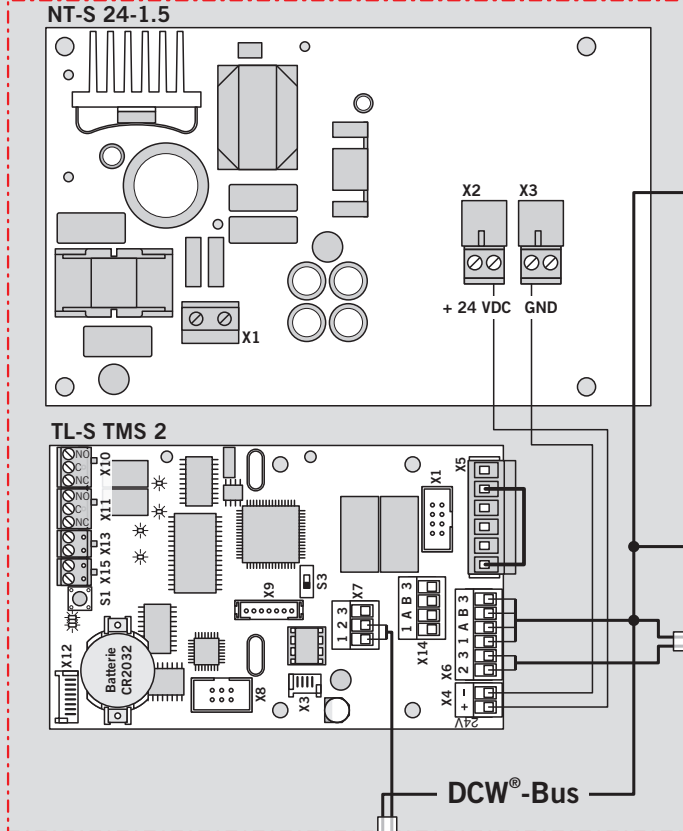


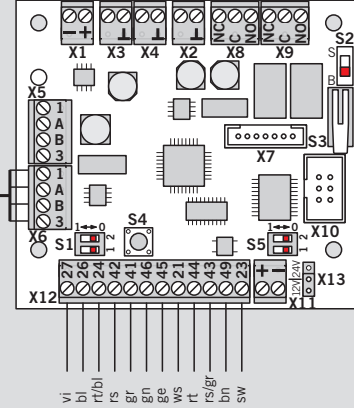
WN 057652 45532
08/08

RZ-TMS 2 Compact + TL-S DCW® + TV 1xx DCW® + SVP-S DCW®

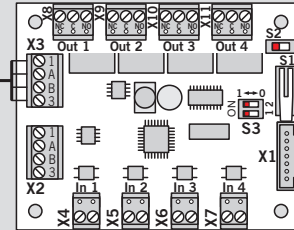
RZ-TMS 2 Compact



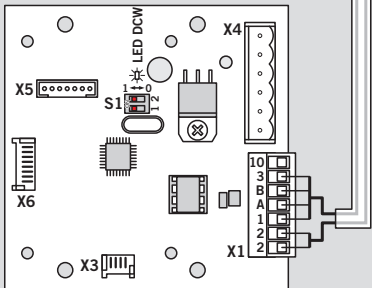
SVP-S 2x DCW®



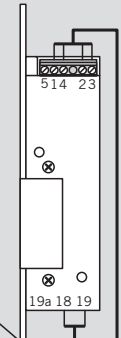
I/O-Modul DCW®



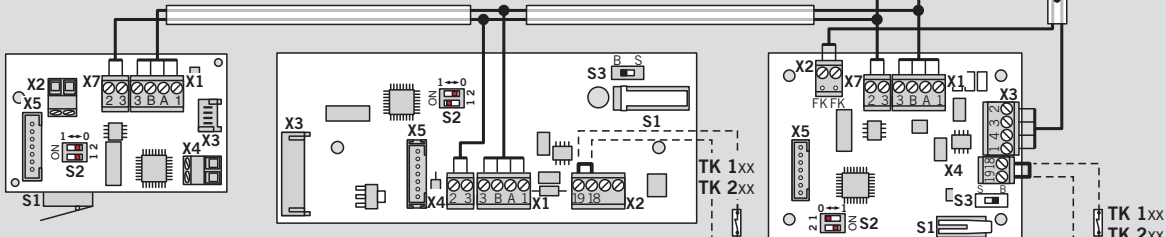
TL-S DCW®



TV 50x

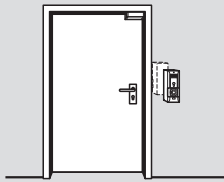


I - Y (ST) Y 4 x 2 x 0,8
Kabel geschützt verlegen
Lay cable protected

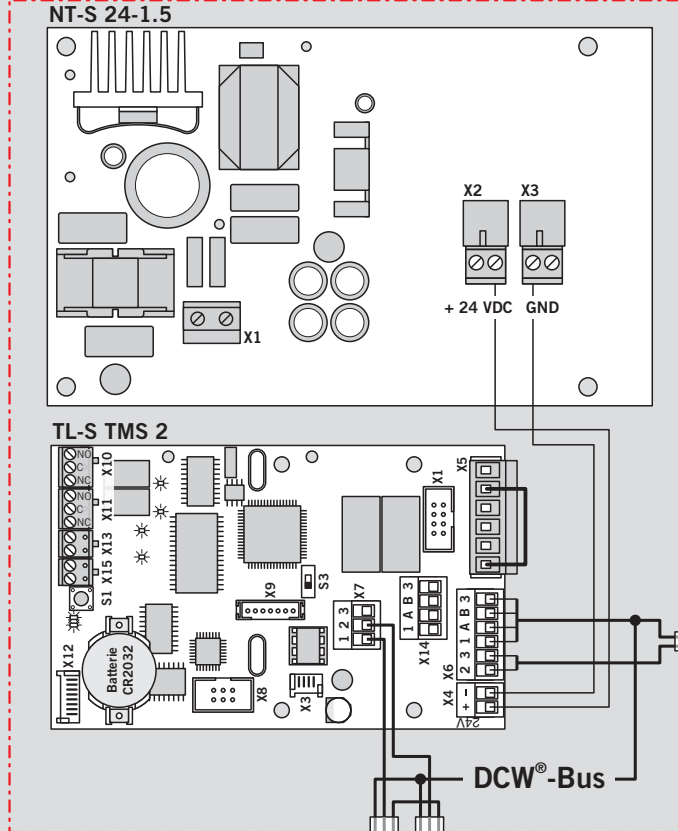


1 TV 1xx DCW® -- und/oder -- TV 2xx DCW® -- und/oder -- TV 50x DCW®

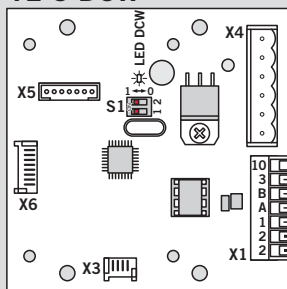
RZ-TMS 2 Compact + 2x TL-S DCW® + TV 1xx DCW®



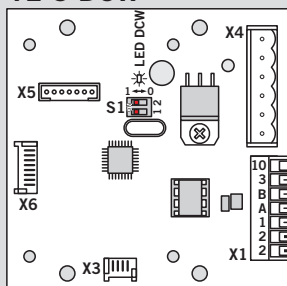
RZ-TMS 2 Compact



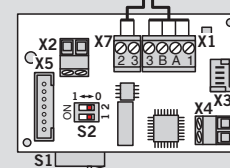
TL-S DCW®



TL-S DCW®



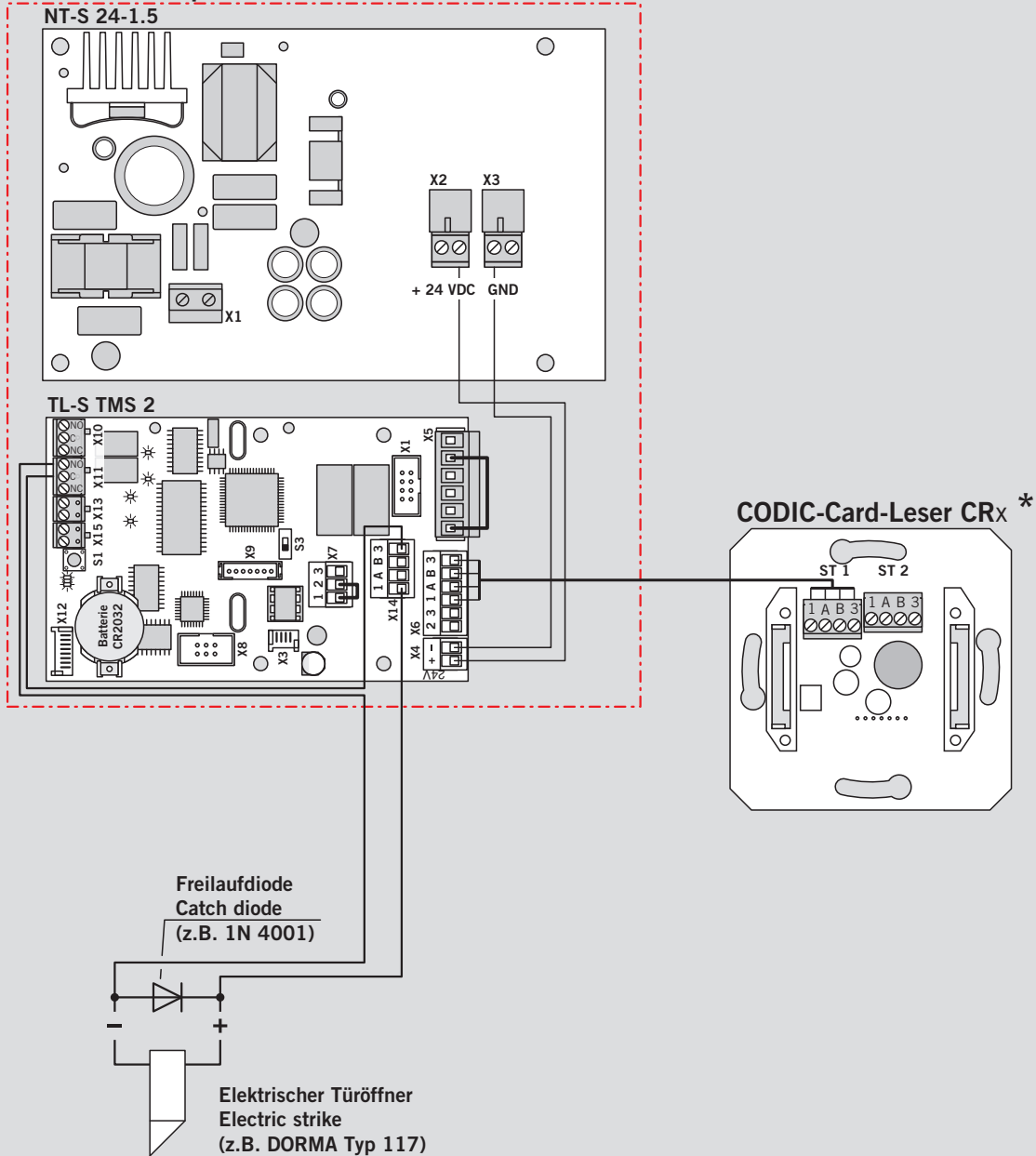
I - Y (ST) Y 4 x 2 x 0,8
Kabel geschützt verlegen
Lay cable protected



TV 1xx DCW®

RZ-TMS 2 Compact als Zutrittskontrollsystem
RZ-TMS 2 Compact as access control system

RZ-TMS 2 Compact



Parametrierung TL-S TMS 2:
OUT1 = Kurzzeitentriegelung aktiv
Parameter configuration TL-S TMS 2:
OUT1 = Short-time unlocking active

* Berührungslose Identifikationsmittel:
Non-contact identification media:
Hitag1, Hitag2, Legic, Mifare, EM4102, EM4450

Anderungen vorbehalten
Subject to change without notice